

TAJ Series



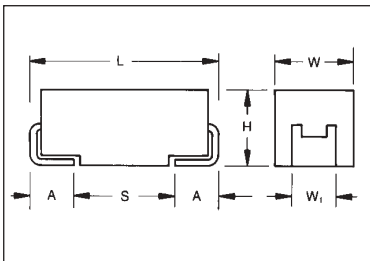
Standard Tantalum



The TAJ standard series encompasses the five key sizes recognized by major OEMs throughout the world. The V case size has been added to the TAJ range to allow high CVs to be offered. The

operational temperature is -55°C to $+85^{\circ}\text{C}$ at rated voltage and up to $+125^{\circ}\text{C}$ with voltage derating in applications utilizing recommended series resistance.

CASE DIMENSIONS: millimeters (inches)



For part marking see page 93

Code	EIA Code	$L \pm 0.20$ (0.008)	$W \pm 0.20$ (0.008) -0.10 (0.004)	$H \pm 0.20$ (0.008) -0.10 (0.004)	$W_1 \pm 0.20$ (0.008)	$A \pm 0.30$ (0.012) -0.20 (0.008)	S Min.
A	3216-18	3.20 (0.126)	1.60 (0.063)	1.60 (0.063)	1.20 (0.047)	0.80 (0.031)	1.10 (0.043)
B	3528-21	3.50 (0.138)	2.80 (0.110)	1.90 (0.075)	2.20 (0.087)	0.80 (0.031)	1.40 (0.055)
C	6032-28	6.00 (0.236)	3.20 (0.126)	2.60 (0.102)	2.20 (0.087)	1.30 (0.051)	2.90 (0.114)
D	7343-31	7.30 (0.287)	4.30 (0.169)	2.90 (0.114)	2.40 (0.094)	1.30 (0.051)	4.40 (0.173)
E	7343-43	7.30 (0.287)	4.30 (0.169)	4.10 (0.162)	2.40 (0.094)	1.30 (0.051)	4.40 (0.173)
V	7361-38	7.30 (0.287)	6.10 (0.240)	3.45 ± 0.30 (0.136 ± 0.012)	3.10 (0.120)	1.40 (0.055)	4.40 (0.173)

W_1 dimension applies to the termination width for A dimensional area only.

HOW TO ORDER

TAJ

Type

C

Case Code
See table above

106

Capacitance Code
pF code: 1st two digits represent significant figures
3rd digit represents multiplier (number of zeros to follow)

M

Tolerance
 $K = \pm 10\%$
 $M = \pm 20\%$

035

Rated DC Voltage
002=2Vdc
004=4Vdc
006=6.3Vdc
010=10Vdc
016=16Vdc
020=20Vdc
025=25Vdc
035=35Vdc
050=50Vdc

R

Packaging
R = 7" T/R
S = 13" T/R
A = Gold Plating
7" Reel
B = Gold Plating
13" Reel

Additional characters may be added for special requirements

TECHNICAL SPECIFICATIONS

Technical Data:

All technical data relate to an ambient temperature of $+25^{\circ}\text{C}$

Capacitance Range:

0.1 μF to 1000 μF

Capacitance Tolerance:

$\pm 10\%$; $\pm 20\%$

Rated Voltage (V_R)	$\cong +85^{\circ}\text{C}$:	2	4	6.3	10	16	20	25	35	50
Category Voltage (V_C)	$\cong +125^{\circ}\text{C}$:	1.3	2.7	4	7	10	13	17	23	33
Surge Voltage (V_S)	$\cong +85^{\circ}\text{C}$:	2.7	5.2	8	13	20	26	32	46	65
Surge Voltage (V_S)	$\cong +125^{\circ}\text{C}$:	1.7	3.2	5	8	12	16	20	28	40

Temperature Range:

-55°C to $+125^{\circ}\text{C}$

Reliability:

1% per 1000 hours at 85°C , V_R with 0.1 Ω/V_R series impedance, 60% confidence level

Qualification:

CECC 30801 - 005 issue 2
EIA 535BAAC



CAPACITANCE AND RATED VOLTAGE, V_R (VOLTAGE CODE) RANGE (LETTER DENOTES CASE SIZE)

Capacitance		Rated voltage DC (V_R) to 85°C								
μF	Code	2.5V (F)	4V (G)	6.3V (J)	10V (A)	16V (C)	20V (D)	25V (E)	35V (V)	50V (T)
0.10	104								A	A
0.15	154								A	A/B
0.22	224								A	A/B
0.33	334								A	B
0.47	474							A	A/B	C
0.68	684						A	A	A/B	C
1.0	105					A		A	A/B	B/C
1.5	155				A	A		A	A/B/C	C/D
2.2	225			A	A	A/B		A/B	B/C	C/D
3.3	335			A	A	A/B		B/C	B/C	C/D
4.7	475		A	A	A/B	A/B		B/C	B/C/D	D
6.8	685		A	A/B	A/B	A/B/C		B/C	C/D	D
10	106		A	A/B	A/B/C	A/B/C		B/C	C/D/E	E
15	156		A/B	A/B	A/B/C	B/C		B/C/D	C/D	
22	226		A	A/B/C	A/B/C	B/C/D		B/C/D	C/D	
33	336		A/B	A/B/C	B/C/D	B/C/D		C/D	D/E	
47	476	A	A/B	B/C/D	B/C/D	C/D		C/D/E	D/E	
68	686	A	B/C	B/C/D	C/D	C/D		D/E	E/V	
100	107		B/C	B/C/D	C/D/E	D/E		D/E/V		
150	157	B	B	C/D	C/D/E	D/E/V		E/V		
220	227	B	C/D	C/D/E	D/E	D/E/V				
330	337		C/D/E	C/D/E	D/E/V	E/V				
470	477		D/E	D/E/V	E/V					
680	687		D/E	E/V	V					
1000	108	E	E/V	V						
1500	158	E								

Non preferred Ratings - not recommended for new designs, higher voltage or smaller case size substitution are offered.

Developmental Ratings - subject to change.

Available Ratings

Note: Voltage ratings are minimum values. AVX reserves the right to supply higher ratings in the same case size, to the same reliability standards.

RATINGS & PART NUMBER REFERENCE

AVX Part No.	Case Size	Capacitance (µF)	Rated Voltage (V)	DCL (µA) Max.	DF % Max.	ESR Max. (mΩ) @100kHz
TAJA476*002#	A	47	2.5	0.9	6	3000
TAJA686*002#	A	68	2.5	1.4	8	2000
TAJB157*002#	B	150	2.5	3	10	1600
TAJB227*002#	B	220	2.5	4.4	8	1600
TAJE108*002#	E	1000	2.5	20	20	900
TAJE158*002#	E	1500	2.5	30	20	900
TAJA336*004#	A	33	4	1.3	6	3000
TAJA476*004#	A	47	4	1.9	8	2600
TAJB686*004#	B	68	4	2.7	6	1800
TAJB107*004#	B	100	4	4	8	900
TAJB157*004#	B	150	4	6	8	1500
TAJC227*004#	C	220	4	8.8	8	1200
TAJD227*004#	D	220	4	8.8	8	900
TAJC337*004#	C	330	4	13.2	8	900
TAJD337*004#	D	330	4	13.2	8	900
TAJD477*004#	D	470	4	18.8	12	900
TAJE477*004#	E	470	4	18.8	10	500
TAJD687*004#	D	680	4	27.2	14	500
TAJE687*004#	E	680	4	27.2	14	900
TAJE108*004#	E	1000	4	40	14	400
TAJV108*004#	V	1000	4	40	16	400
TAJA106*006#	A	10	6.3	0.6	6	4000
TAJA156*006#	A	15	6.3	0.9	6	3500
TAJA226*006#	A	22	6.3	1.4	6	3000
TAJA336*006#	A	33	6.3	2.1	8	2500
TAJB476*006#	B	47	6.3	3	6	2000
TAJC476*006#	C	47	6.3	3	6	1600
TAJB686*006#	B	68	6.3	4	8	900
TAJC686*006#	C	68	6.3	4.3	6	1500
TAJB107*006#	B	100	6.3	6.3	10	1700
TAJC107*006#	C	100	6.3	6.3	6	900
TAJC157*006#	C	150	6.3	9.5	6	1300
TAJD157*006#	D	150	6.3	9.5	6	900
TAJC227*006#	C	220	6.3	13.9	8	1200
TAJD227*006#	D	220	6.3	13.9	8	900
TAJE227*006#	E	220	6.3	13.9	8	900
TAJC337*006#	C	330	6.3	19.8	8	500
TAJD337*006#	D	330	6.3	20.8	8	400
TAJE337*006#	E	330	6.3	20.8	8	400
TAJD477*006#	D	470	6.3	28	12	400
TAJE477*006#	E	470	6.3	28	10	400
TAJV477*006#	V	470	6.3	28	10	400
TAJE687*006#	E	680	6.3	42.8	10	500
TAJV687*006#	V	680	6.3	42.8	10	500
TAJV108*006#	V	1000	6.3	63	16	400

All technical data relates to an ambient temperature of +25°C. Capacitance and DF are measured at 120Hz, 0.5V RMS with a maximum DC bias of 2.2 volts. DCL is measured at rated voltage after 5 minutes.

*Insert K for ±10% and M for ±20%

Capacitance Tolerance

Standard Plating – Insert R for 7" reel and S for 13" reel

Gold Plating – Insert A for 7" reel and B for 13" reel

Developmental Ratings - subject to change.

Available Ratings

NOTE: AVX reserves the right to supply a higher voltage rating or tighter tolerance part in the same case size, to the same reliability standards.

AVX Part No.	Case Size	Capacitance (µF)	Rated Voltage (V)	DCL (µA) Max.	DF % Max.	ESR Max. (mΩ) @100kHz
TAJA475*010#	A	4.7	10	0.5	6	5000
TAJA685*010#	A	6.8	10	0.7	6	4000
TAJA106*010#	A	10	10	1	6	3000
TAJA156*010#	A	15	10	1.5	6	3200
TAJB156*010#	B	15	10	1.5	6	2800
TAJA226*010#	A	22	10	2.2	8	3000
TAJB226*010#	B	22	10	2.2	6	2400
TAJB336*010#	B	33	10	3.3	6	1800
TAJC336*010#	C	33	10	3.3	6	1600
TAJB476*010#	B	47	10	4.7	8	1000
TAJC476*010#	C	47	10	4.7	6	1200
TAJC686*010#	C	68	10	6.8	6	1300
TAJC107*010#	C	100	10	10	8	1200
TAJD107*010#	D	100	10	10	6	900
TAJC157*010#	C	150	10	15	8	900
TAJD157*010#	D	150	10	15	6	900
TAJE157*010#	E	150	10	15	8	900
TAJD227*010#	D	220	10	22	8	500
TAJE227*010#	E	220	10	22	8	500
TAJD337*010#	D	330	10	33	8	900
TAJE337*010#	E	330	10	33	8	900
TAJV337*010#	V	330	10	33	10	900
TAJE477*010#	E	470	10	47	10	500
TAJV477*010#	V	470	10	47	10	500
TAJV687*010#	V	680	10	68	12	400
TAJA225*016#	A	2.2	16	0.5	6	6500
TAJA335*016#	A	3.3	16	0.5	6	5000
TAJB335*016#	B	3.3	16	0.5	6	4500
TAJA475*016#	A	4.7	16	0.8	6	4000
TAJB475*016#	B	4.7	16	0.8	6	3500
TAJA685*016#	A	6.8	16	1.1	6	3500
TAJB685*016#	B	6.8	16	1.1	6	2500
TAJA106*016#	A	10	16	1.6	8	3000
TAJB106*016#	B	10	16	1.6	6	2800
TAJC106*016#	C	10	16	1.6	6	2000
TAJB156*016#	B	15	16	2.4	6	2500
TAJC156*016#	C	15	16	2.4	6	1800
TAJB226*016#	B	22	16	3.5	6	2300
TAJC226*016#	C	22	16	3.5	6	1600
TAJD226*016#	D	22	16	3.5	6	1100
TAJB336*016#	B	33	16	5.3	8	2100
TAJC336*016#	C	33	16	5.3	6	1500
TAJD336*016#	D	33	16	5.3	6	900
TAJC476*016#	C	47	16	7.5	6	1400
TAJD476*016#	D	47	16	7.5	6	900
TAJC686*016#	C	68	16	10.9	6	1300
TAJD686*016#	D	68	16	10.9	6	900
TAJD107*016#	D	100	16	16	6	900
TAJE107*016#	E	100	16	16	6	900
TAJD157*016#	D	150	16	24	6	900
TAJE157*016#	E	150	16	24	6	900
TAJV157*016#	V	150	16	24	8	500
TAJD227*016#	D	220	16	35.2	12	500
TAJE227*016#	E	220	16	35.2	10	500
TAJV227*016#	V	220	16	35.2	8	900
TAJV337*016#	V	330	16	52.8	10	500

RATINGS & PART NUMBER REFERENCE

AVX Part No.	Case Size	Capacitance (µF)	Rated Voltage (V)	DCL (µA) Max.	DF % Max.	ESR Max. (mΩ) @100kHz
TAJA105*020#	A	1	20	0.5	4	9000
TAJA155*020#	A	1.5	20	0.5	6	6500
TAJA225*020#	A	2.2	20	0.5	6	5300
TAJB225*020#	B	2.2	20	0.5	6	3500
TAJA335*020#	A	3.3	20	0.7	6	4500
TAJB335*020#	B	3.3	20	0.7	6	3000
TAJA475*020#	A	4.7	20	0.9	6	4000
TAJB475*020#	B	4.7	20	0.9	6	3000
TAJB685*020#	B	6.8	20	1.4	6	2500
TAJC685*020#	C	6.8	20	1.4	6	2000
TAJB106*020#	B	10	20	2	6	2100
TAJC106*020#	C	10	20	2	6	1900
TAJB156*020#	B	15	20	3	6	2000
TAJC156*020#	C	15	20	3	6	1700
TAJB226*020#	B	22	20	4.4	6	1800
TAJC226*020#	C	22	20	4.4	6	1600
TAJD226*020#	D	22	20	4.4	6	900
TAJC336*020#	C	33	20	6.6	6	1500
TAJD336*020#	D	33	20	6.6	6	900
TAJC476*020#	C	47	20	9.4	6	900
TAJD476*020#	D	47	20	9.4	6	900
TAJE476*020#	E	47	20	9.4	6	900
TAJD686*020#	D	68	20	13.6	6	900
TAJE686*020#	E	68	20	13.6	6	900
TAJD107*020#	D	100	20	20	6	900
TAJE107*020#	E	100	20	20	6	900
TAJV107*020#	V	100	20	20	8	900
TAJV157*020#	V	150	20	30	8	500
TAJA474*025#	A	0.47	25	0.5	4	14000
TAJA684*025#	A	0.68	25	0.5	4	10000
TAJA105*025#	A	1	25	0.5	4	8000
TAJA155*025#	A	1.5	25	0.5	6	7500
TAJB155*025#	B	1.5	25	0.5	6	5000
TAJA225*025#	A	2.2	25	0.6	6	7000
TAJB225*025#	B	2.2	25	0.6	6	4500
TAJB335*025#	B	3.3	25	0.8	6	3500
TAJB475*025#	B	4.7	25	1.2	6	2800
TAJB685*025#	B	6.8	25	1.7	6	2800
TAJC685*025#	C	6.8	25	1.7	6	2000
TAJC106*025#	C	10	25	2.5	6	1800
TAJD106*025#	D	10	25	2.5	6	1200
TAJC156*025#	C	15	25	3.8	6	1600
TAJD156*025#	D	15	25	3.8	6	1000
TAJC226*025#	C	22	25	5.5	6	1400
TAJD226*025#	D	22	25	5.5	6	900
TAJD336*025#	D	33	25	8.3	6	900
TAJE336*025#	E	33	25	8.3	6	900
TAJD476*025#	D	47	25	11.8	6	900
TAJE476*025#	E	47	25	11.8	6	900
TAJE686*025#	E	68	25	17	6	900
TAJV686*025#	V	68	25	17	6	900

AVX Part No.	Case Size	Capacitance (µF)	Rated Voltage (V)	DCL (µA) Max.	DF % Max.	ESR Max. (mΩ) @100kHz
TAJA104*035#	A	0.1	35	0.5	4	24000
TAJA154*035#	A	0.15	35	0.5	4	21000
TAJA224*035#	A	0.22	35	0.5	4	18000
TAJA334*035#	A	0.33	35	0.5	4	15000
TAJA474*035#	A	0.47	35	0.5	4	12000
TAJB474*035#	B	0.47	35	0.5	4	10000
TAJA684*035#	A	0.68	35	0.5	4	8000
TAJB684*035#	B	0.68	35	0.5	4	8000
TAJA105*035#	A	1	35	0.5	4	7500
TAJB105*035#	B	1	35	0.5	4	6500
TAJA155*035#	A	1.5	35	0.5	6	7500
TAJB155*035#	B	1.5	35	0.5	6	5200
TAJC155*035#	C	1.5	35	0.5	6	4500
TAJB225*035#	B	2.2	35	0.8	6	4200
TAJC225*035#	C	2.2	35	0.8	6	3500
TAJB335*035#	B	3.3	35	1.2	6	3500
TAJC335*035#	C	3.3	35	1.2	6	2500
TAJB475*035#	B	4.7	35	1.2	6	3100
TAJC475*035#	C	4.7	35	1.6	6	2200
TAJD475*035#	D	4.7	35	1.6	6	1500
TAJC685*035#	C	6.8	35	2.4	6	1800
TAJD685*035#	D	6.8	35	2.4	6	1300
TAJC106*035#	C	10	35	3.5	6	1600
TAJD106*035#	D	10	35	3.5	6	1000
TAJC105*035#	C	10	35	3.5	6	900
TAJC156*035#	C	15	35	5.3	6	1400
TAJD156*035#	D	15	35	5.3	6	900
TAJD226*035#	D	22	35	7.7	6	900
TAJC685*035#	C	22	35	7.7	6	900
TAJD336*035#	D	33	35	11.6	6	900
TAJE336*035#	E	33	35	11.6	6	900
TAJE476*035#	E	47	35	16.5	6	900
TAJA104*050#	A	0.1	50	0.5	4	22000
TAJA154*050#	A	0.15	50	0.5	4	15000
TAJB154*050#	B	0.15	50	0.5	4	17000
TAJA224*050#	A	0.22	50	0.5	4	18000
TAJB224*050#	B	0.22	50	0.5	4	14000
TAJB334*050#	B	0.33	50	0.5	4	12000
TAJC474*050#	C	0.47	50	0.5	4	8000
TAJC684*050#	C	0.68	50	0.5	4	7000
TAJB105*050#	B	1	50	0.5	4	7000
TAJC105*050#	C	1	50	0.5	4	5500
TAJC155*050#	C	1.5	50	0.8	6	4500
TAJD155*050#	D	1.5	50	0.8	6	4000
TAJC225*050#	C	2.2	50	1.1	6	3000
TAJD225*050#	D	2.2	50	1.1	6	2500
TAJC335*050#	C	3.3	50	1.7	6	2500
TAJD335*050#	D	3.3	50	1.7	6	2000
TAJD475*050#	D	4.7	50	2.4	6	1400
TAJD685*050#	D	6.8	50	3.4	6	1000
TAJE106*050#	E	10	50	5	6	1000

All technical data relates to an ambient temperature of +25°C. Capacitance and DF are measured at 120Hz, 0.5V RMS with a maximum DC bias of 2.2 volts. DCL is measured at rated voltage after 5 minutes.

* Insert K for ±10% and M for ±20% Capacitance Tolerance # Standard Plating – Insert R for 7" reel and S for 13" reel # Gold Plating – Insert A for 7" reel and B for 13" reel

Developmental Ratings - subject to change.
Available Ratings

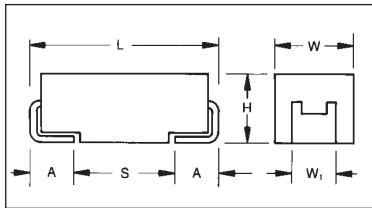
NOTE: AVX reserves the right to supply a higher voltage rating or tighter tolerance part in the same case size, to the same reliability standards.

Low Profile



Five additional case sizes are available in the TAJ range offering low profile solid tantalum chip capacitors. Designed for applications where maximum height of components above or below board are of prime consideration, this height of 1.2,

1.5 and 2.0mm equates to that of a standard integrated circuit package after mounting. The S&T footprints are identical to the A&B case size parts and the W&Y footprints to C&D case size parts.



For part marking see page 108

CASE DIMENSIONS: millimeters (inches)

Code	EIA Code	L±0.20 (0.008)	W+0.20 (0.008) -0.10 (0.004)	H Max.	W ₁ ±0.20 (0.008)	A+0.30 (0.012) -0.20 (0.008)	S Min.
R*	2012-12	2.05 (0.081)	1.30 (0.051)	1.20 (0.047)	1.20 (0.047)	0.50 (0.020)	0.85 (0.033)
P	2012-15	2.05 (0.081)	1.35 (0.053)	1.50 (0.059)	1.20 (0.047)	0.50 (0.020)	0.85 (0.033)
S**	3216-12	3.20 (0.126)	1.60 (0.063)	1.20 (0.047)	1.20 (0.047)	0.80 (0.031)	1.10 (0.043)
T**	3528-12	3.50 (0.138)	2.80 (0.110)	1.20 (0.047)	2.20 (0.087)	0.80 (0.031)	1.40 (0.055)
W**	6032-15	6.00 (0.236)	3.20 (0.126)	1.50 (0.059)	2.20 (0.087)	1.30 (0.051)	2.90 (0.114)
Y**	7343-20	7.30 (0.287)	4.30 (0.169)	2.00 (0.079)	2.40 (0.094)	1.30 (0.051)	4.40 (0.173)
X**	7343-15	7.30 (0.287)	4.30 (0.169)	1.50 (0.059)	2.40 (0.094)	1.30 (0.051)	4.40 (0.173)

* 0805 Footprint Compatible

** Low Profile Versions of A & B & C & D Case, respectively

W₁ dimension applies to the termination width for A dimensional area only.
Pad Stand-off is 0.1±0.1.

HOW TO ORDER

TAJ

Type

Y

Case Code
See table above

107

Capacitance Code
pF code: 1st two digits represent significant figures
3rd digit represents multiplier (number of zeros to follow)

M

Tolerance
K=±10%
M=±20%

010

Rated DC Voltage
002=2.5Vdc
004=4Vdc
006=6.3Vdc
010=10Vdc
016=16Vdc
020=20Vdc
025=25Vdc
035=35Vdc
050=50Vdc

R

Packaging
R = 7" T/R
S = 13" T/R
A = Gold Plating
7" Reel
B = Gold Plating
13" Reel
Y = Lead Free
7" Reel
P = Lead Free
13" Reel

Additional characters may be added for special requirements

TECHNICAL SPECIFICATIONS

Technical Data:

All technical data relate to an ambient temperature of +25°C

Capacitance Range:

0.1µF to 470µF

Capacitance Tolerance:

±10%; ±20%

Rated Voltage (V _R)	≧ +85°C:	2.5	4	6.3	10	16	20	25	35	50
Category Voltage (V _C)	≧ +125°C:	1.3	2.7	4	7	10	13	17	23	33
Surge Voltage (V _S)	≧ +85°C:	2.7	5.2	8	13	20	26	32	46	65
Surge Voltage (V _S)	≧ +125°C:	1.7	3.2	5	8	12	16	20	28	40

Temperature Range:

-55°C to +125°C

Reliability:

1% per 1000 hours at 85°C, V_r with 0.1Ω/V series impedance,
60% confidence level

CAPACITANCE AND VOLTAGE RANGE (LETTER DENOTES CASE SIZE)

Capacitance		Rated voltage DC (V_R) at 85°C								
μF	Code	2.5V	4V	6.3V	10V	16V	20V	25V	35V	50V
0.10	104						R/S		S	
0.15	154						R/S		S	
0.22	224						R/S		S	
0.33	334						R/S		S	
0.47	474						R/S	S	S/T	
0.68	684					R/S	R/S/T	S	S/T	
1.0	105				R/S	R/S/T	R/S/T	S	S/T	
1.5	155			R/S	R/S	R/S	S/T	T	T	
2.2	225		R/S	R/S	R/S	R/S/T	S/T	T	T	
3.3	335		R/S	R/S	R/S/T	R/S/T	T	T	W	Y
4.7	475	R	R/S	R/S/T	R/S/T	P/S/T	T	T	W	Y
6.8	685	R	S/T	R/S/T	P/S/T	T		W	Y	
10	106	S	R/S/T	R/S/T	P/S/T	T/W	W	W	X/Y	
15	156		R/S	P/S/T	T		W	Y		
22	226	P	S/P	S/T	T	W	W/Y	Y		
33	336	P/S		T/W	W	Y/W	Y			
47	476		T	T/W	W	X/Y	Y			
68	686			W	W/Y	X/Y	Y			
100	107		W	W/Y	X/Y	Y				
150	157		W	X	Y					
220	227		W/X	X/Y	Y					
330	337			Y						
470	477		Y							
680	687	Y								
1000	108									

Developmental Ratings - subject to change.

Note: Voltage ratings are minimum values. AVX reserves the right to supply higher ratings in the same case size, to the same reliability standards.

RATINGS & PART NUMBER REFERENCE

AVX Part No.	Case Size	Capacitance (µF)	Rated Voltage (V)	DCL (µA) Max.	DF % Max.	ESR Max. (mΩ) @100kHz
TAJR475*002#	R	4.7	2.5	0.5	6	20000
TAJR685*002#	R	6.8	2.5	0.5	6	20000
TAJS106*002#	S	10	2.5	0.5	6	8000
TAJP226*002#	P	2.2	2.5	0.5	8	3500
TAJP336*002#	P	3.3	2.5	0.7	8	3500
TAJS336*002#	S	3.3	2.5	0.7	8	1500
TAJR225*004#	R	2.2	4	0.5	6	25000
TAJS225*004#	S	2.2	4	0.5	6	25000
TAJR335*004#	R	3.3	4	0.5	6	20000
TAJS335*004#	S	3.3	4	0.5	6	18000
TAJR475*004#	R	4.7	4	0.5	6	12000
TAJS475*004#	S	4.7	4	0.5	6	10000
TAJS685*004#	S	6.8	4	0.5	6	8000
TAJT685*004#	T	6.8	4	0.5	6	6000
TAJR106*004#	R	10	4	0.5	6	7000
TAJS106*004#	S	10	4	0.5	6	6000
TAJT106*004#	T	10	4	0.6	6	5000
TAJR156*004#	R	15	4	0.6	8	4000
TAJS156*004#	S	15	4	0.6	8	4000
TAJS226*004#	S	22	4	0.9	8	3500
TAJP226*004#	P	22	4	0.9	8	5000
TAJT476*004#	T	47	4	1.9	10	2000
TAJW107*004#	W	100	4	4	6	1300
TAJW157*004#	W	150	4	6	6	1300
TAJW227*004#	W	220	4	8.8	8	1200
TAJX227*004#	X	220	4	8.8	8	900
TAJY477*004#	Y	470	4	18.8	14	900
TAJR155*006#	R	1.5	6.3	0.5	6	25000
TAJS155*006#	S	1.5	6.3	0.5	6	25000
TAJR225*006#	R	2.2	6.3	0.5	6	20000
TAJS225*006#	S	2.2	6.3	0.5	6	18000
TAJR335*006#	R	3.3	6.3	0.5	6	12000
TAJS335*006#	S	3.3	6.3	0.5	6	9000
TAJR475*006#	R	4.7	6.3	0.5	6	7000
TAJS475*006#	S	4.7	6.3	0.5	6	7500
TAJT475*006#	T	4.7	6.3	0.5	6	6000
TAJR685*006#	R	6.8	6.3	0.5	8	7000
TAJS685*006#	S	6.8	6.3	0.5	6	7000
TAJT685*006#	T	6.8	6.3	0.5	6	5000
TAJR106*006#	R	10	6.3	0.6	8	6000
TAJS106*006#	S	10	6.3	0.6	6	6000
TAJT106*006#	T	10	6.3	0.6	6	4000
TAJP156*006#	P	15	6.3	0.9	8	3500
TAJS156*006#	S	15	6.3	0.9	8	4000
TAJT156*006#	T	15	6.3	0.9	6	3500
TAJS226*006#	S	22	6.3	1.3	10	1800
TAJT226*006#	T	22	6.3	1.4	8	2500
TAJT336*006#	T	33	6.3	2.1	10	2500
TAJW336*006#	W	33	6.3	2.1	6	1800
TAJT476*006#	T	47	6.3	2.8	10	1600
TAJW476*006#	W	47	6.3	3	6	1500
TAJW686*006#	W	68	6.3	4.3	6	1500
TAJY107*006#	Y	100	6.3	6.3	6	900
TAJW107*006#	W	100	6.3	6.3	6	900
TAJX157*006#	X	150	6.3	9.5	6	900
TAJX227*006#	X	220	6.3	13.2	8	300
TAJY227*006#	Y	220	6.3	13.9	10	900
TAJY337*006#	Y	330	6.3	20.8	8	900

AVX Part No.	Case Size	Capacitance (µF)	Rated Voltage (V)	DCL (µA) Max.	DF % Max.	ESR Max. (mΩ) @100kHz
TAJR105*010#	R	1	10	0.5	4	25000
TAJS105*010#	S	1	10	0.5	4	25000
TAJR155*010#	R	1.5	10	0.5	6	20000
TAJS155*010#	S	1.5	10	0.5	6	20000
TAJR225*010#	R	2.2	10	0.5	6	15000
TAJS225*010#	S	2.2	10	0.5	6	12000
TAJR335*010#	R	3.3	10	0.5	6	8000
TAJS335*010#	S	3.3	10	0.5	6	8000
TAJT335*010#	T	3.3	10	0.5	6	6000
TAJR475*010#	R	4.7	10	0.5	6	9000
TAJS475*010#	S	4.7	10	0.5	6	5000
TAJT475*010#	T	4.7	10	0.5	6	5000
TAJP685*010#	P	6.8	10	0.7	6	4000
TAJS685*010#	S	6.8	10	0.7	6	4000
TAJT685*010#	T	6.8	10	0.7	6	4000
TAJP106*010#	P	10	10	1	8	6000
TAJS106*010#	S	10	10	1	8	4000
TAJT106*010#	T	10	10	1	6	3000
TAJT156*010#	T	15	10	1.5	8	2800
TAJT226*010#	T	22	10	2.2	8	2200
TAJP336*010#	P	33	10	3.3	6	1600
TAJW476*010#	W	47	10	4.7	6	1400
TAJY686*010#	Y	68	10	6.8	6	900
TAJW686*010#	W	68	10	6.8	6	1300
TAJX107*010#	X	100	10	10	8	900
TAJY107*010#	Y	100	10	10	6	900
TAJY157*010#	Y	150	10	15	6	1200
TAJY227*010#	Y	220	10	22	10	500
TAJR684*016#	R	0.68	16	0.5	4	25000
TAJS684*016#	S	0.68	16	0.5	4	25000
TAJR105*016#	R	1	16	0.5	4	20000
TAJS105*016#	S	1	16	0.5	4	15000
TAJT105*016#	T	1	16	0.5	4	5000
TAJR155*016#	R	1.5	16	0.5	6	10000
TAJS155*016#	S	1.5	16	0.5	6	12000
TAJR225*016#	R	2.2	16	0.5	6	6500
TAJS225*016#	S	2.2	16	0.5	6	6000
TAJT225*016#	T	2.2	16	0.5	6	6500
TAJR335*016#	R	3.3	16	0.5	8	5000
TAJS335*016#	S	3.3	16	0.5	6	5000
TAJT335*016#	T	3.3	16	0.5	6	5000
TAJP475*016#	P	4.7	16	0.8	8	5000
TAJS475*016#	S	4.7	16	0.8	8	4500
TAJT475*016#	T	4.7	16	0.8	6	4500
TAJT685*016#	T	6.8	16	1.1	6	3500
TAJT106*016#	T	10	16	1.6	8	2200
TAJW106*016#	W	10	16	1.6	6	2000
TAJW226*016#	W	22	16	3.5	6	1600
TAJW336*016#	W	33	16	5.3	6	1500
TAJY336*016#	Y	33	16	5.3	6	900
TAJX476*016#	X	47	16	7.5	6	900
TAJY476*016#	Y	47	16	7.5	6	700
TAJX686*016#	X	68	16	10.9	8	600
TAJY686*016#	Y	68	16	10.9	6	900
TAJY107*016#	Y	100	16	16	8	900

All technical data relates to an ambient temperature of +25°C. Capacitance and DF are measured at 120Hz, 0.5V RMS with a maximum DC bias of 2.2 volts. DCL is measured at rated voltage after 5 minutes.

* Insert K for ±10% and M for ±20% Capacitance Tolerance # Standard Plating – Insert R for 7" reel and S for 13" reel # Gold Plating – Insert A for 7" reel and B for 13" reel

NOTE: AVX reserves the right to supply a higher voltage rating or tighter tolerance part in the same case size, to the same reliability standards.

RATINGS & PART NUMBER REFERENCE

AVX Part No.	Case Size	Capacitance (μF)	Rated Voltage (V)	DCL (μA) Max.	DF % Max.	ESR Max. (mΩ) @100kHz
TAJ104*020#	R	0.1	20	0.5	4	25000
TAJS104*020#	S	0.1	20	0.5	4	25000
TAJR154*020#	R	0.15	20	0.5	4	25000
TAJS154*020#	S	0.15	20	0.5	4	25000
TAJR224*020#	R	0.22	20	0.5	4	25000
TAJS224*020#	S	0.22	20	0.5	4	25000
TAJR334*020#	R	0.33	20	0.5	4	25000
TAJS334*020#	S	0.33	20	0.5	4	25000
TAJR474*020#	R	0.47	20	0.5	4	25000
TAJS474*020#	S	0.47	20	0.5	4	25000
TAJR684*020#	R	0.68	20	0.5	4	20000
TAJS684*020#	S	0.68	20	0.5	4	25000
TAJR105*020#	R	1	20	0.5	4	20000
TAJS105*020#	S	1	20	0.5	4	12000
TAJT105*020#	T	1	20	0.5	4	9000
TAJS155*020#	S	1.5	20	0.5	6	5000
TAJT155*020#	T	1.5	20	0.5	6	6500
TAJS225*020#	S	2.2	20	0.5	6	3000
TAJT225*020#	T	2.2	20	0.5	6	6000
TAJT335*020#	T	3.3	20	0.7	6	3000
TAJT475*020#	T	4.7	20	0.9	6	3000
TAJW106*020#	W	10	20	2	6	1900
TAJW156*020#	W	15	20	3	6	1700
TAJY226*020#	Y	22	20	4.4	6	900
TAJW226*020#	W	22	20	4.4	6	1600
TAJY336*020#	Y	33	20	6.6	6	500
TAJY476*020#	Y	47	20	9.4	6	400
TAJY686*020#	Y	68	20	13.6	6	400
TAJS474*025#	S	0.47	25	0.5	4	14000
TAJS684*025#	S	0.68	25	0.5	4	10000
TAJS105*025#	S	1	25	0.5	4	8000
TAJT155*025#	T	1.5	25	0.5	6	5000
TAJT225*025#	T	2.2	25	0.6	6	4500
TAJT335*025#	T	3.3	25	0.8	6	3500
TAJW685*025#	W	6.8	25	1.7	6	2000
TAJW106*025#	W	10	25	2.5	6	1800
TAJY156*025#	Y	15	25	3.8	6	1000
TAJY226*025#	Y	22	25	5.5	6	900

AVX Part No.	Case Size	Capacitance (μF)	Rated Voltage (V)	DCL (μA) Max.	DF % Max.	ESR Max. (mΩ) @100kHz
TAJS104*035#	S	0.1	35	0.5	4	24000
TAJS154*035#	S	0.15	35	0.5	4	21000
TAJS224*035#	S	0.22	35	0.5	4	18000
TAJS334*035#	S	0.33	35	0.5	4	15000
TAJS474*035#	S	0.47	35	0.5	4	12000
TAJT474*035#	T	0.47	35	0.5	4	10000
TAJS684*035#	S	0.68	35	0.5	4	8000
TAJT684*035#	T	0.68	35	0.5	4	8000
TAJS105*035#	S	1	35	0.5	4	7500
TAJT105*035#	T	1	35	5	4	6500
TAJT155*035#	T	1.5	35	0.5	6	5200
TAJT225*035#	T	2.2	35	0.8	6	4200
TAJW475*035#	W	4.7	35	1.6	6	2200
TAJY685*035#	Y	6.8	35	2.3	6	900
TAJX106*035#	X	10	35	3.5	6	700
TAJY106*035#	Y	10	35	3.5	6	1000
TAJY335*050#	Y	3.3	50	1.7	4	1700

All technical data relates to an ambient temperature of +25°C. Capacitance and DF are measured at 120Hz, 0.5V RMS with a maximum DC bias of 2.2 volts. DCL is measured at rated voltage after 5 minutes.

* Insert K for ±10% and M for ±20% Capacitance Tolerance
 # Standard Plating – Insert R for 7" reel and S for 13" reel
 # Gold Plating – Insert A for 7" reel and B for 13" reel

NOTE: AVX reserves the right to supply a higher voltage rating or tighter tolerance part in the same case size, to the same reliability standards.